

Need assistance?



**DO NOT RETURN THIS
PRODUCT TO THE STORE**

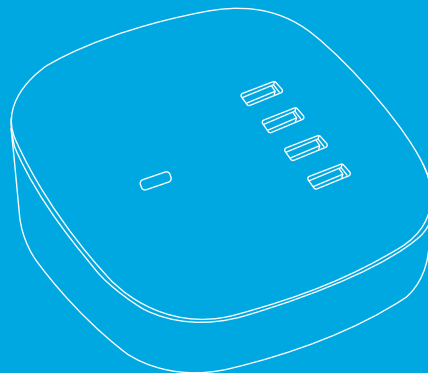
Call 1-800-757-1440
Mon-Fri 9:00 a.m. - 5:00 p.m. EST (US)
or email us at info@atomiusa.com



Charge Pad

30W USB-C Power Delivery Port +
4 USB Smart Charge Ports

User Manual



Date Code: 03/19

Thank you for purchasing the atomi Charge Pad

Charging all your devices and keeping them organized while doing it just got a whole lot easier...and faster!

The Charge Pad is equipped with USB-PD and Ai Smart Charge technology. That means you get the quickest charge possible—for all five devices!

What's Inside

Charge Pad

Specifications

Input: 100-240V~50/60Hz 1.5A max

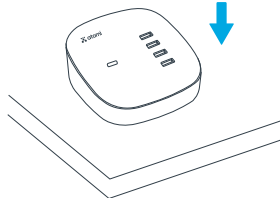
USB Output: 5V=2.4A (Each Port)

Total USB Output Current: 6A max

USB-C PD Output: 5V=3A, 9V=3A, 12V=2.5A, 15V=2A

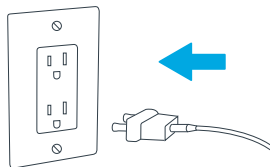
1

Place on any flat surface



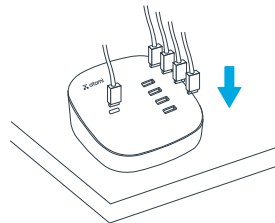
2

Plug into any nearby outlet



3

Charge up to five USB devices



Charging Various Devices at Once with the Charge Pad



Tablet



Mobile phone



Mp3 player



Camera



Sports camera



Gaming console

Connect up to five USB devices!

Safety Information

1. Read these instructions carefully for best use.
2. DO NOT use the Charge Pad near water or expose it to rain or moisture.
3. DO NOT use the Charge Pad near open flames, such as candles, heat sources, radiators and stoves.
4. Only clean the Charge Pad with a dry cloth.
5. Caution: Risk of electric shock.
6. For connection to a supply not in the U.S.A., use an attachment plug adapter of the proper configuration for the power outlet, if needed.
7. Please check prior use, if output voltage and current of the power supply is suitable for the product.
8. Children should be supervised to ensure that they do not play with the appliance.

For questions or concerns, email us at info@atomiusa.com
Manufactured and marketed by Atomi Inc.
10 West 33rd St., New York, NY 10001
atomi™ is a trademark of Atomi Inc.
Designed by atomi in New York. Made in China

One-year limited warranty from the date of purchase
against defects in material and workmanship.